

Student Academic and Scholarly Achievements



Academic

- 1) Strong performance in NBME summative exams and USMLE STEP1 and STEP 2 exams
- 2) Strong performance in the clinical rotations. Excellent feedback from the preceptors
- 3) Class 2019 Match **96.3%**, Class 2020 Match **98.6%**, many graduates moved onto top residency programs or their top choice residency program
- 4) COM team won the third place of national emergency medicine clinical skill competition for residents

Step 1 Histogram – 2017

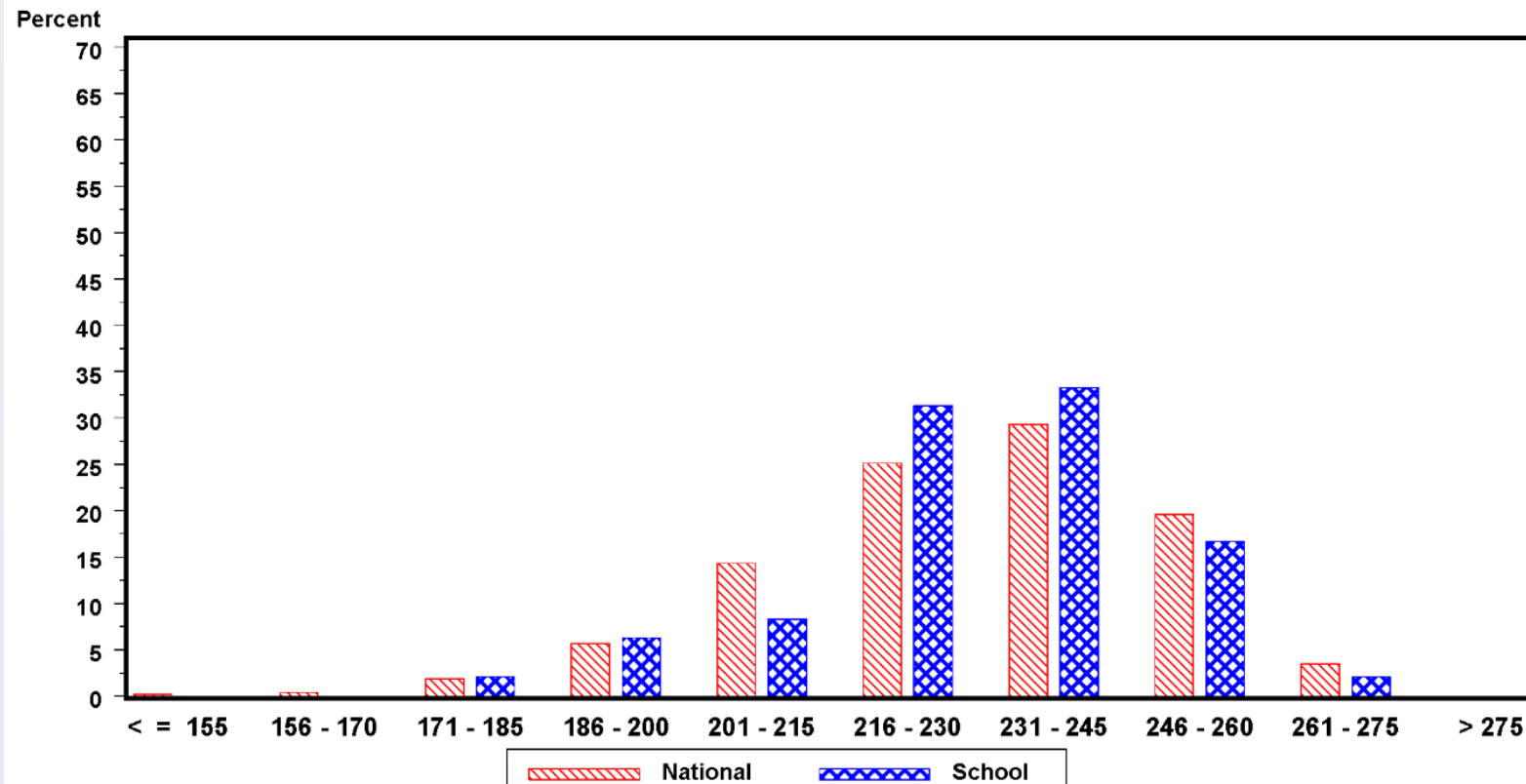


NATIONAL BOARD OF MEDICAL EXAMINERS®

Distribution of Total Scores

Interim Report on Performance of Examinees Taking USMLE® Step 1
for the First Time in 2017 with Scores Reported Through September 27

Medical School: 005-300 California Northstate Univ



Step 1 Performance Summary – 2017

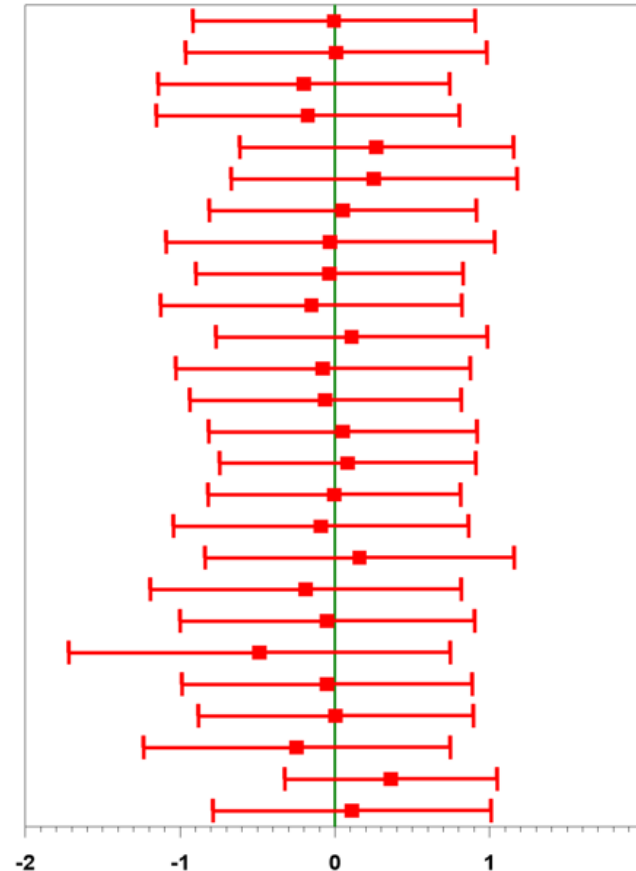


NATIONAL BOARD OF MEDICAL EXAMINERS[®]

Interim Report on Performance of Examinees Taking USMLE[®] Step 1 for the First Time in 2017 with Scores Reported Through September 27

Medical School: 005-300 California Northstate Univ

- 1-MK: Applying Foundational Science Concepts
- 1-PC: Diagnosis
- 1-PC: Management
- 1-PBLI: Evidence-Based Medicine
- 2-Behavioral Sciences
- 2-Biochemistry
- 2-Genetics
- 2-Gross Anatomy & Embryology
- 2-Histology & Cell Biology
- 2-Microbiology & Immunology
- 2-Nutrition
- 2-Pathology
- 2-Pharmacology
- 2-Physiology
- 3-General Principles
- 3-Immune System
- 3-Blood & Lymphoreticular System
- 3-Behavioral Health & Nervous Systems/Special Senses
- 3-Musculoskeletal, Skin, & Subcutaneous Tissue
- 3-Cardiovascular System
- 3-Respiratory System
- 3-Gastrointestinal System
- 3-Renal/Urinary System
- 3-Reproductive System
- 3-Endocrine System
- 3-Multisystem Processes & Disorders



Step 1 Performance Summary – 2017



#	University	Step 1	#	University	Step 1
1	Harvard University	245	16	Icahn School of Medicine at Mount Sinal	237
2	Mayo Clinic School of Medicine	245	17	Boston University	237
3	University of Pennsylvania (Perelman)	244	18	University of Pittsburgh	236
4	Washington University in St. Louis	244	19	University of Texas Southwestern Medical Center	236
5	Baylor College of Medicine	244	20	Johns Hopkins University	235
6	Vanderbilt University	244	21	University of Virginia	234
7	Stanford University	243	22	University of California – San Francisco	233
8	New York University (Langone)	241	23	University of Michigan – Ann Arbor	233
9	Duke University	241	24	University of California – San Diego	232
10	Cornell University (Weill)	241	25	Emory University	232
11	Yale University	240	26	University of California – Los Angeles	230
12	University of Chicago (Pritzker)	240	27	University of Wisconsin - Madison	226
13	Columbia University	239	28	Oregon Health and Science University	226
14	Northwestern University (Feinberg)	239	29	University of Washington	224
15	Case Western Reserve University	239	30	University of California	224

CNUCOM – Mean for Step 1 is 227 putting it at number 27

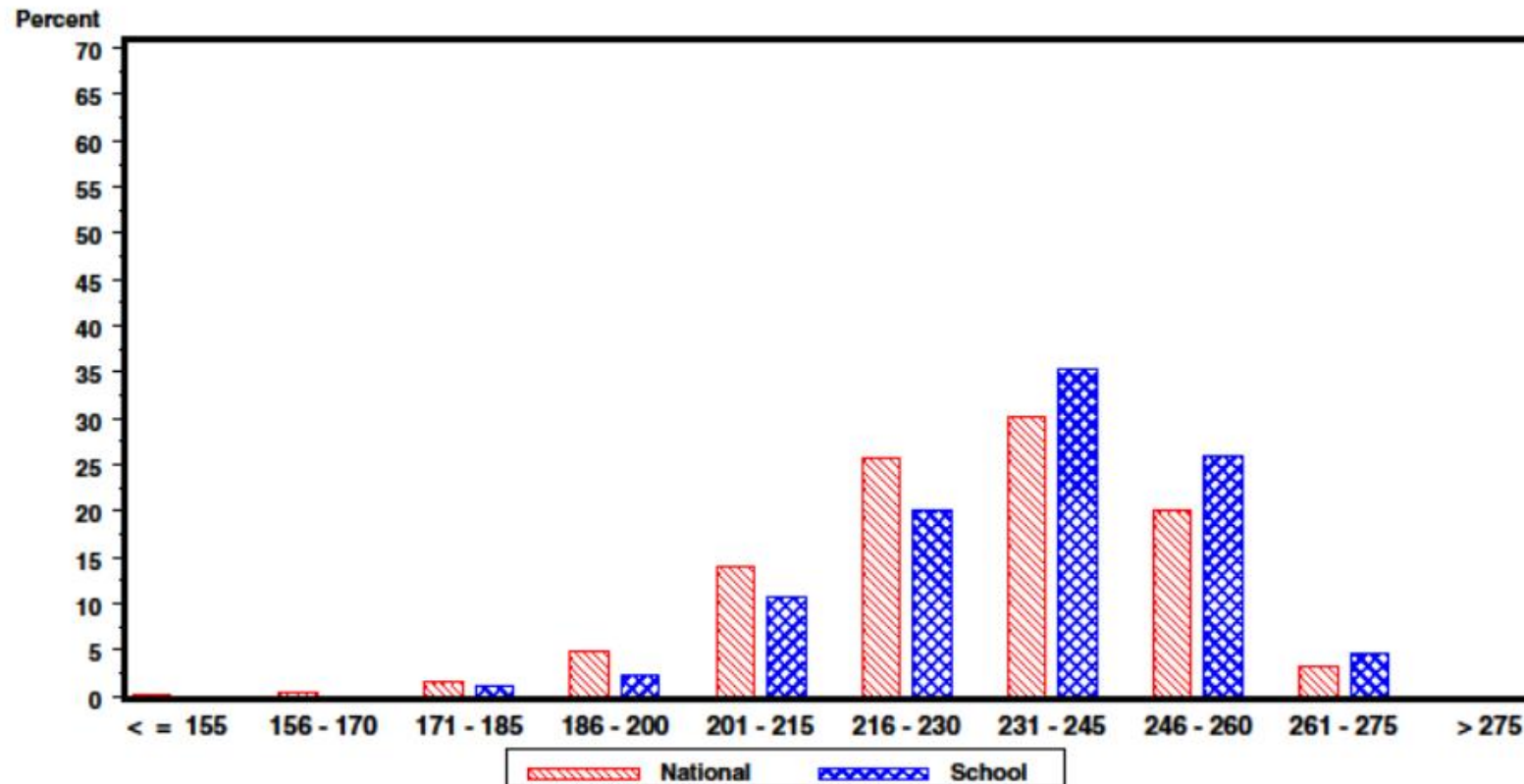
Step 1 Histogram – 2018

NATIONAL BOARD OF MEDICAL EXAMINERS®

Distribution of Total Scores

Interim Report on Performance of Examinees Taking USMLE® Step 1
for the First Time in 2018 with Scores Reported Through September 26

Medical School: 005-300 California Northstate Univ



Step 1 Performance Summary – 2018

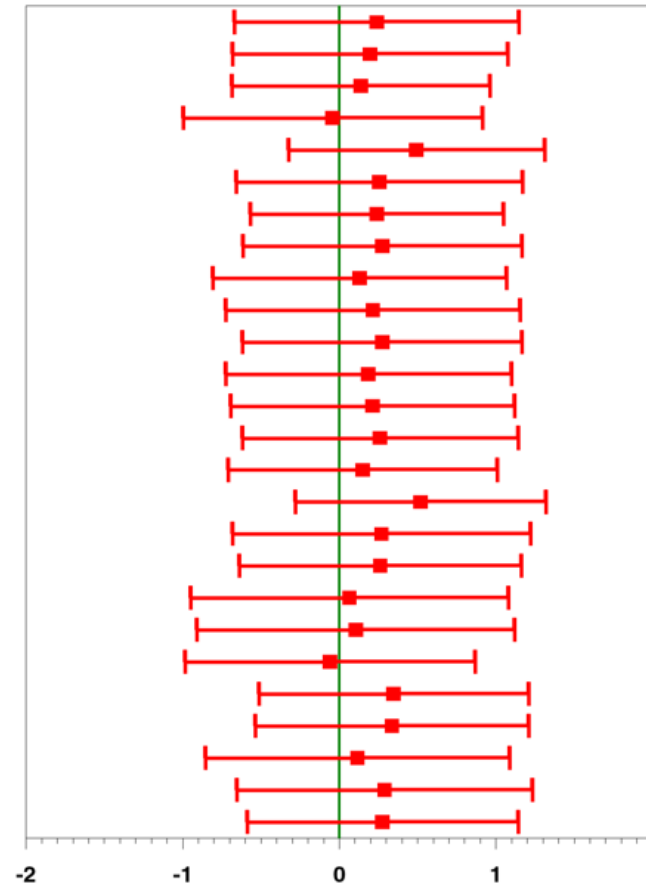


NATIONAL BOARD OF MEDICAL EXAMINERS[®]

Interim Report on Performance of Examinees Taking USMLE[®] Step 1 for the First Time in 2018 with Scores Reported Through September 26

Medical School: 005-300 California Northstate Univ

- 1-MK: Applying Foundational Science Concepts
- 1-PC: Diagnosis
- 1-PC: Management
- 1-PBLI: Evidence-Based Medicine
- 2-Behavioral Sciences
- 2-Biochemistry
- 2-Genetics
- 2-Gross Anatomy & Embryology
- 2-Histology & Cell Biology
- 2-Microbiology & Immunology
- 2-Nutrition
- 2-Pathology
- 2-Pharmacology
- 2-Physiology
- 3-General Principles
- 3-Immune System
- 3-Blood & Lymphoreticular System
- 3-Behavioral Health & Nervous Systems/Special Senses
- 3-Musculoskeletal, Skin, & Subcutaneous Tissue
- 3-Cardiovascular System
- 3-Respiratory System
- 3-Gastrointestinal System
- 3-Renal/Urinary System
- 3-Reproductive System
- 3-Endocrine System
- 3-Multisystem Processes & Disorders



Step 1 Performance Summary – 2018



#	University	Step 1	#	University	Step 1
1	Harvard University	245	16	Icahn School of Medicine at Mount Sinal	237
2	Mayo Clinic School of Medicine	245	17	Boston University	237
3	University of Pennsylvania (Perelman)	244	18	University of Pittsburgh	236
4	Washington University in St. Louis	244	19	University of Texas Southwestern Medical Center	236
5	Baylor College of Medicine	244	20	Johns Hopkins University	235
6	Vanderbilt University	244	21	University of Virginia	234
7	Stanford University	243	22	University of California – San Francisco	233
8	New York University (Langone)	241	23	University of Michigan – Ann Arbor	233
9	Duke University	241	24	University of California – San Diego	232
10	Cornell University (Weill)	241	25	Emory University	232
11	Yale University	240	26	University of California – Los Angeles	230
12	University of Chicago (Pritzker)	240	27	University of Wisconsin - Madison	226
13	Columbia University	239	28	Oregon Health and Science University	226
14	Northwestern University (Feinberg)	239	29	University of Washington	224
15	Case Western Reserve University	239	30	University of California	224

CNUCOM – Mean for Step 1 is 236 putting it at number 20

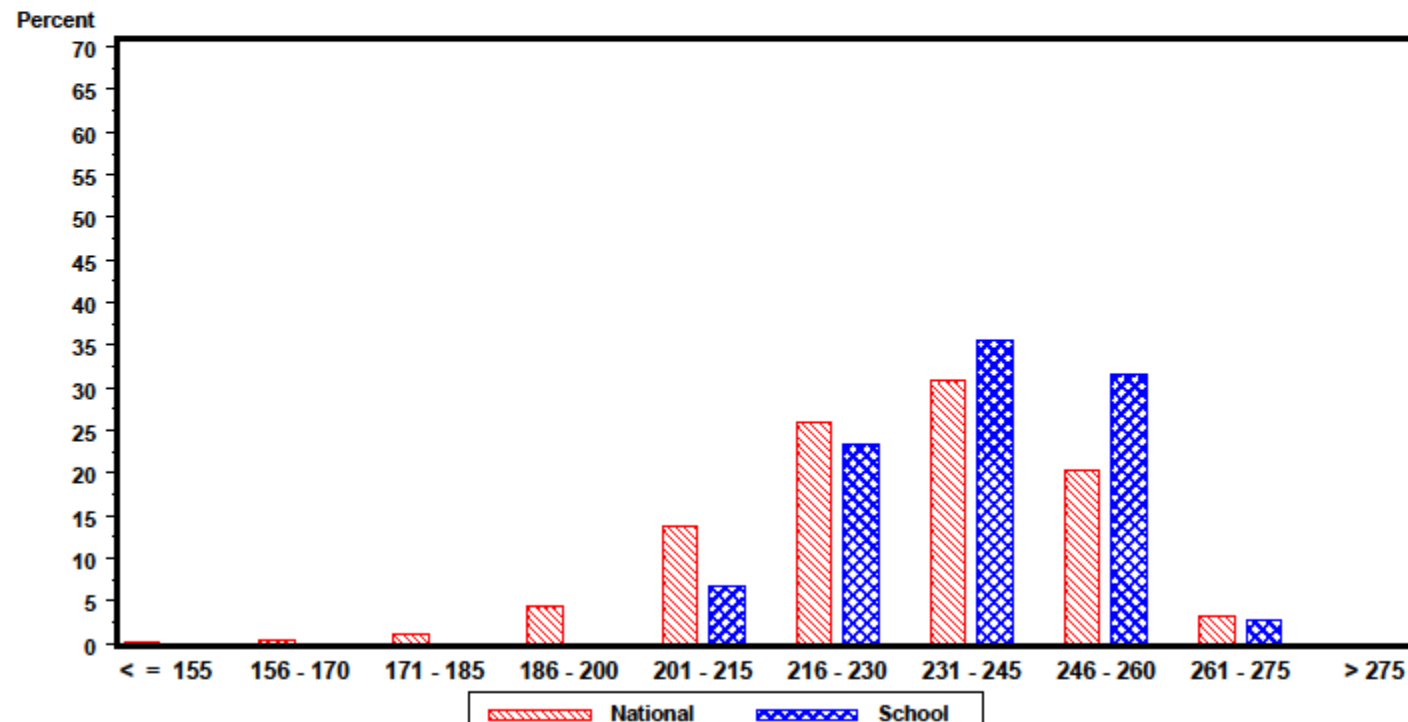
Step 1 Histogram – 2019

NATIONAL BOARD OF MEDICAL EXAMINERS®

Distribution of Total Scores

Interim Report on Performance of Examinees Taking USMLE® Step 1
for the First Time in 2019 with Scores Reported Through September 25

Medical School: 005-300 California Northstate Univ



Step 1 Performance Summary – 2019

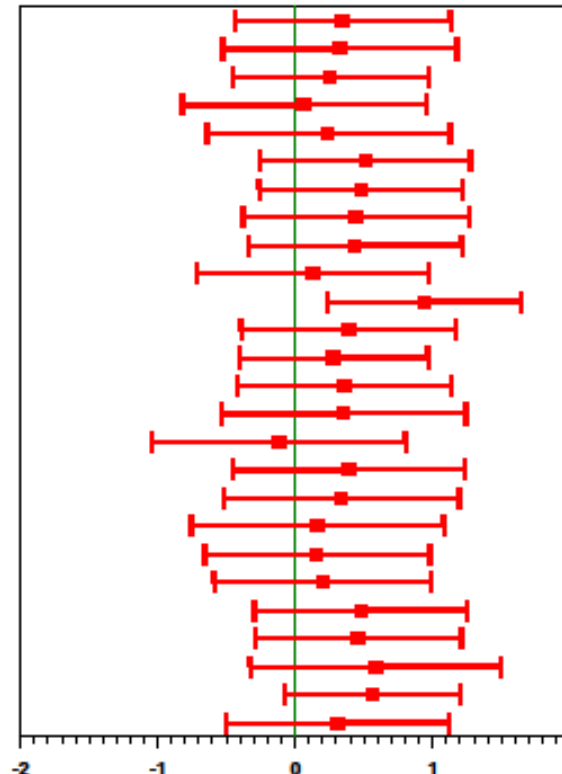


NATIONAL BOARD OF MEDICAL EXAMINERS®

Interim Report on Performance of Examinees Taking USMLE® Step 1
for the First Time in 2019 with Scores Reported Through September 25

Medical School: 005-300 California Northstate Univ

- 1-MK: Applying Foundational Science Concepts
- 1-PC: Diagnosis
- 1-PC: Management
- 1-PBLI: Evidence-Based Medicine
- 2-Behavioral Sciences
- 2-Biochemistry
- 2-Genetics
- 2-Gross Anatomy & Embryology
- 2-Histology & Cell Biology
- 2-Microbiology & Immunology
- 2-Nutrition
- 2-Pathology
- 2-Pharmacology
- 2-Physiology
- 3-General Principles
- 3-Immune System
- 3-Blood & Lymphoreticular System
- 3-Behavioral Health & Nervous Systems/Special Senses
- 3-Musculoskeletal, Skin, & Subcutaneous Tissue
- 3-Cardiovascular System
- 3-Respiratory System
- 3-Gastrointestinal System
- 3-Renal/Urinary System
- 3-Reproductive System
- 3-Endocrine System
- 3-Multisystem Processes & Disorders



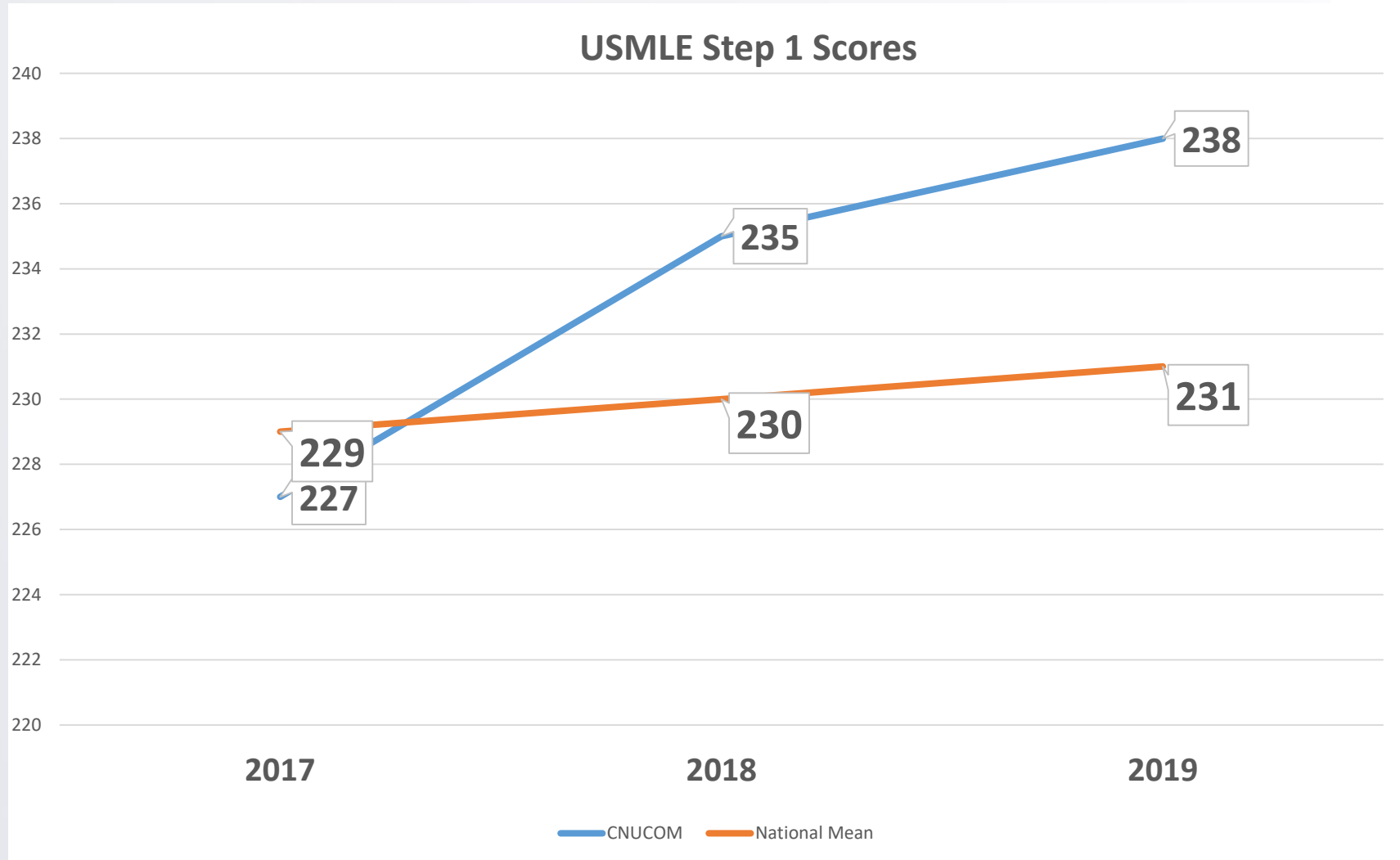
Step 1 Performance Summary – 2019



#	University	Step 1	#	University	Step 1
1	Harvard University	245	16	Icahn School of Medicine at Mount Sinal	237
2	Mayo Clinic School of Medicine	245	17	Boston University	237
3	University of Pennsylvania (Perelman)	244	18	University of Pittsburgh	236
4	Washington University in St. Louis	244	19	University of Texas Southwestern Medical Center	236
5	Baylor College of Medicine	244	20	Johns Hopkins University	235
6	Vanderbilt University	244	21	University of Virginia	234
7	Stanford University	243	22	University of California – San Francisco	233
8	New York University (Langone)	241	23	University of Michigan – Ann Arbor	233
9	Duke University	241	24	University of California – San Diego	232
10	Cornell University (Weill)	241	25	Emory University	232
11	Yale University	240	26	University of California – Los Angeles	230
12	University of Chicago (Pritzker)	240	27	University of Wisconsin - Madison	226
13	Columbia University	239	28	Oregon Health and Science University	226
14	Northwestern University (Feinberg)	239	29	University of Washington	224
15	Case Western Reserve University	239	30	University of California	224

CNUCOM – Mean for Step 1 is 238 putting it at number 16

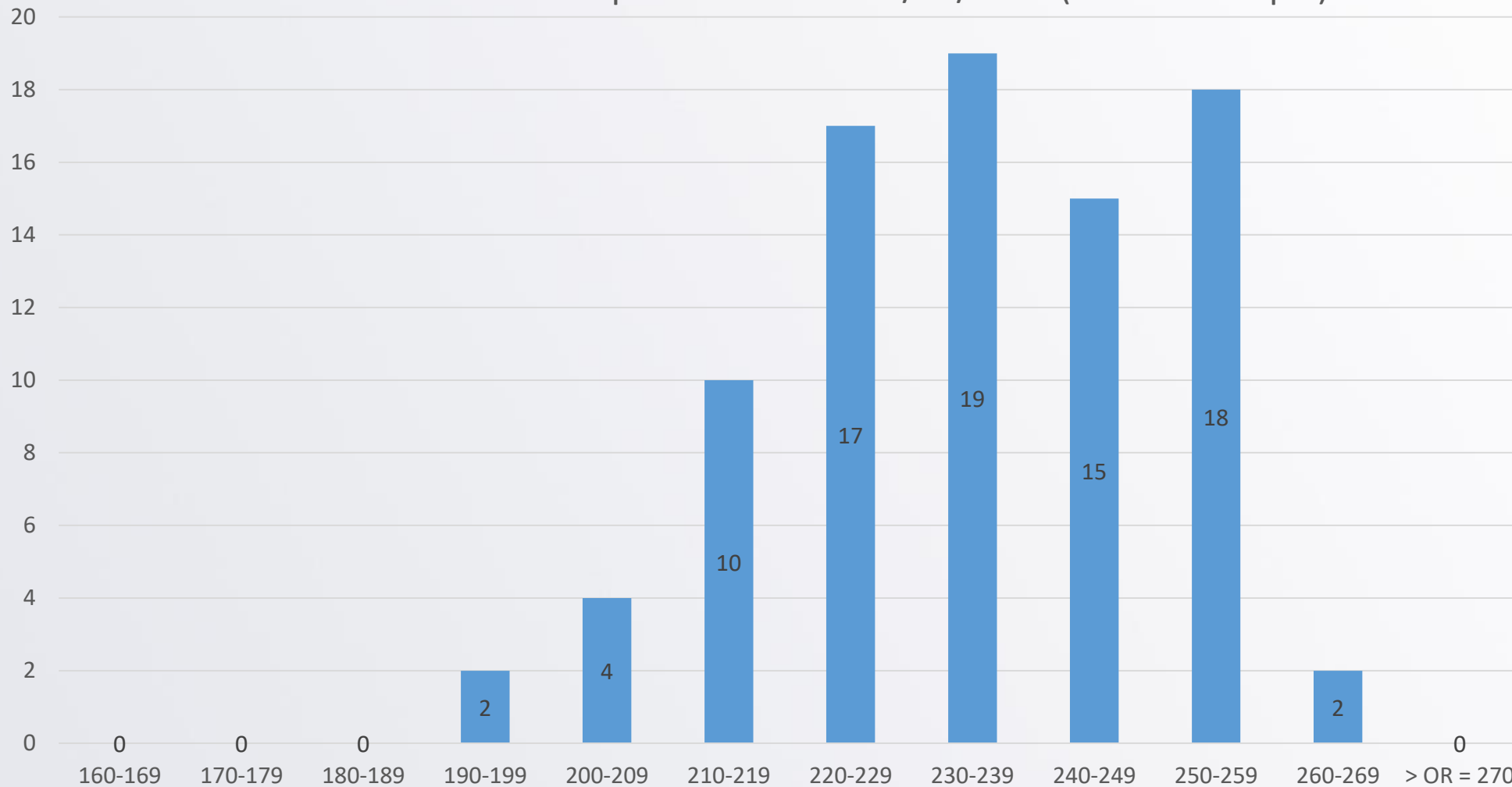
Step 1 Yearly Performance



Step 1 Histogram – 2020



Class of 2021 USMLE Step 1 Scores as of 03/04/2020 (n = 87 attempts)

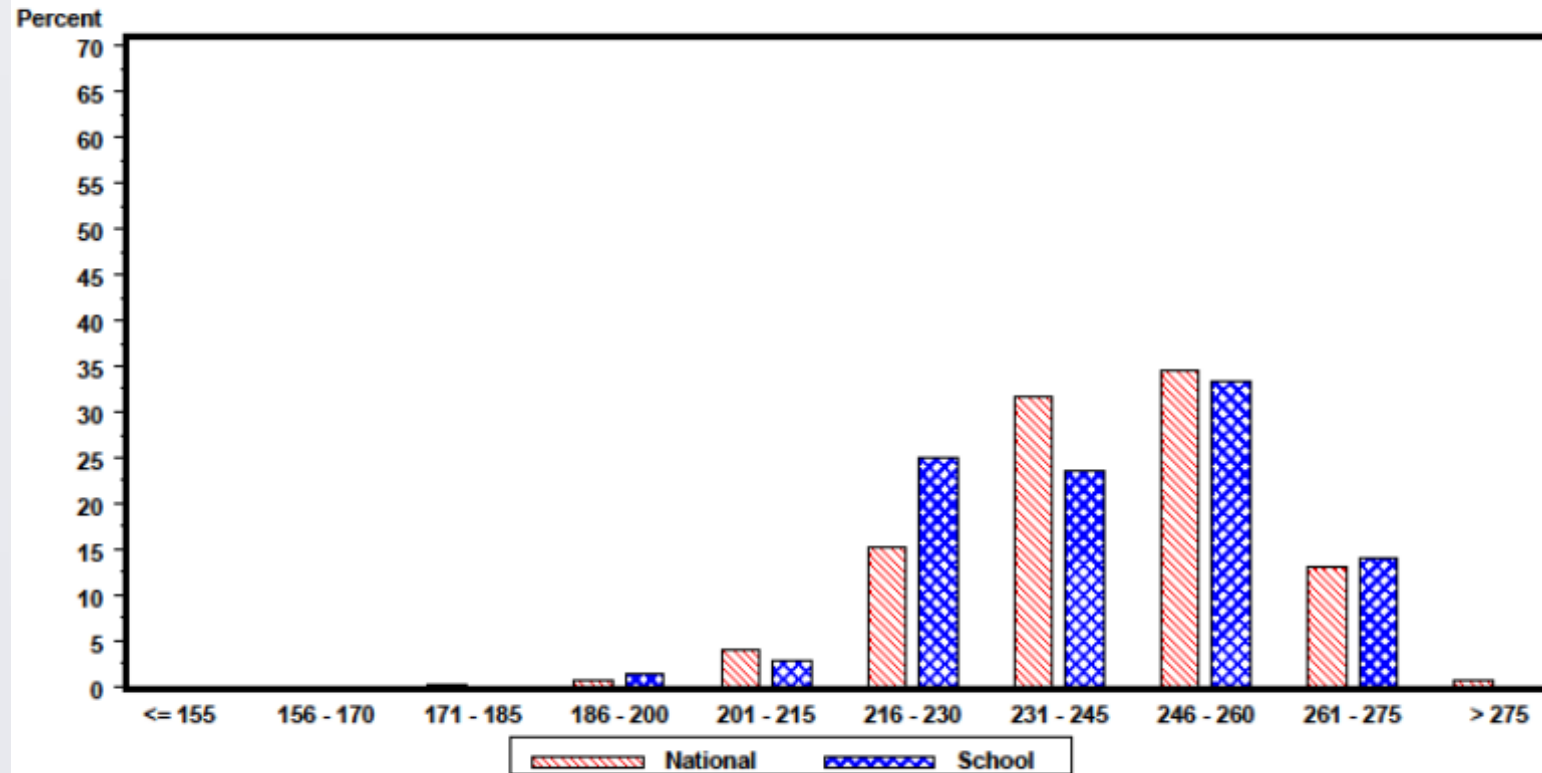


Step 2 Histogram – 2018

NATIONAL BOARD OF MEDICAL EXAMINERS® Distribution of Total Scores

Performance of Examinees Taking USMLE® Step 2 Clinical Knowledge (CK)
for the First Time in the Academic Year
July 2018 to June 2019

Medical School: 005-300 California Northstate Univ



Step 2 Performance Summary – 2018

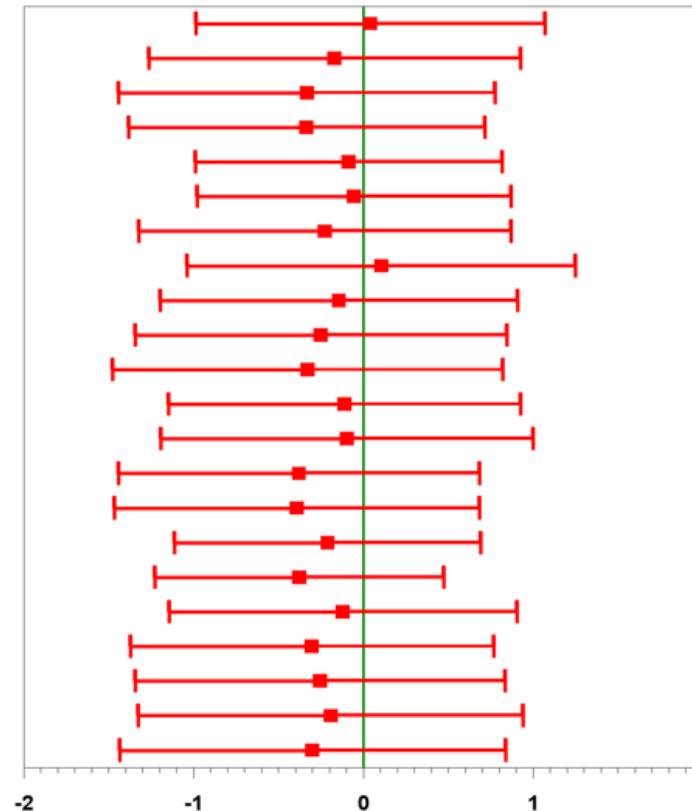


NATIONAL BOARD OF MEDICAL EXAMINERS

Performance of Examinees Taking USMLE Step 2 Clinical Knowledge (CK)
for the First Time in the Academic Year
July 2018 to June 2019

Medical School: 005-300 California Northstate Univ

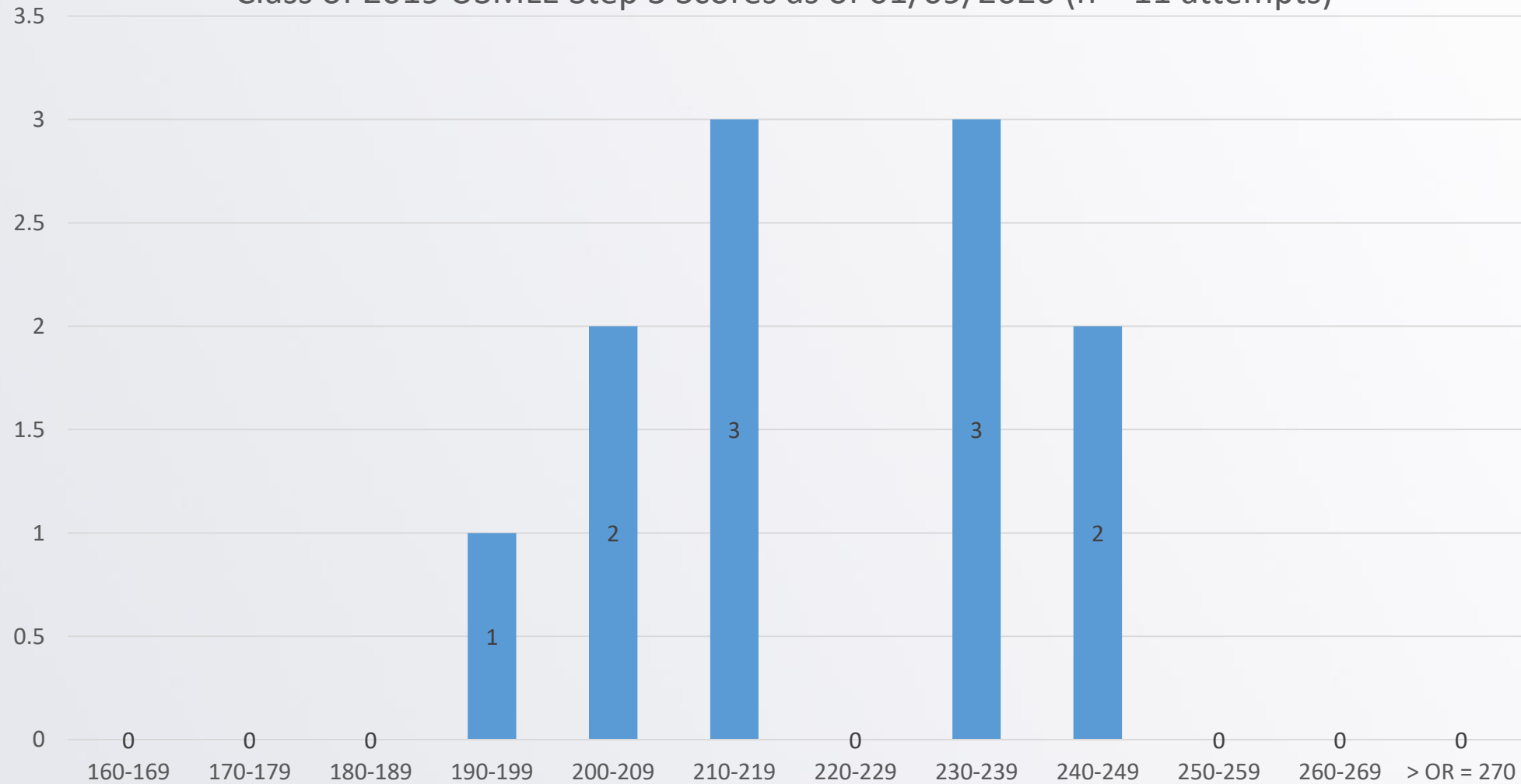
- Applying Foundational Science Concepts
- Patient Care: Diagnosis
- Health Maint, Disease Prevention, & Surveillance
- Patient Care: Management
- Immune System
- Blood & Lymphoreticular System
- Behavioral Health
- Nervous System and Special Senses
- Musculoskeletal Syst/Skin & Subcutaneous Tissue
- Cardiovascular System
- Respiratory System
- Gastrointestinal System
- Renal & Urinary System & Male Reproductive
- Pregnancy, Childbirth & the Puerperium
- Female Reproductive & Breast
- Endocrine System
- Multisystem Processes & Disorders
- Medicine
- Obstetrics & Gynecology
- Pediatrics
- Psychiatry
- Surgery



Step 3



Class of 2019 USMLE Step 3 Scores as of 01/09/2020 (n = 11 attempts)



Class 2019- Match by Specialty



Anesthesiology

Otolaryngology

Emergency Medicine

Pediatrics

EM/IM Combined

Physical Medicine & Rehab

Family Medicine

Psychiatry

Internal Medicine

Radiology

Neurology

Surgery

Class 2020- Match by Specialty



Specialty	Percentage
Primary Care	45.8%
Family Medicine	12.6%
Internal Medicine	17.2%
Pediatrics	12.6%
Obstetrics –Gynecology	3.4%
Emergency Medicine	17.2%
Surgery	11.5%
Psychiatry	6.9%
Radiology	4.6%
Anesthesiology	2.3%
Orthopedics Surgery	2.3%
Pathology	2.3%
Neurology	2.3%
Dermatology	1.1%
Otolaryngology	1.1%
Transition Year	1.1%

Student Academic and Scholarly Achievement

Student Scholarly Success



PUBLICATIONS

- In 2019 students have published **50/87 (57%)** manuscripts.
- In 2020 students have published **99/122 (81%)** manuscripts as of 6/2020

“Wow... very impressive for a new school. Particularly impressive are the number of students engaged in research. This is extraordinary. Other metrics are also impressive.” - Dr. Michael S Wilkes, Vice Dean, UCD Med

PRESENTATION AT CONFERENCES

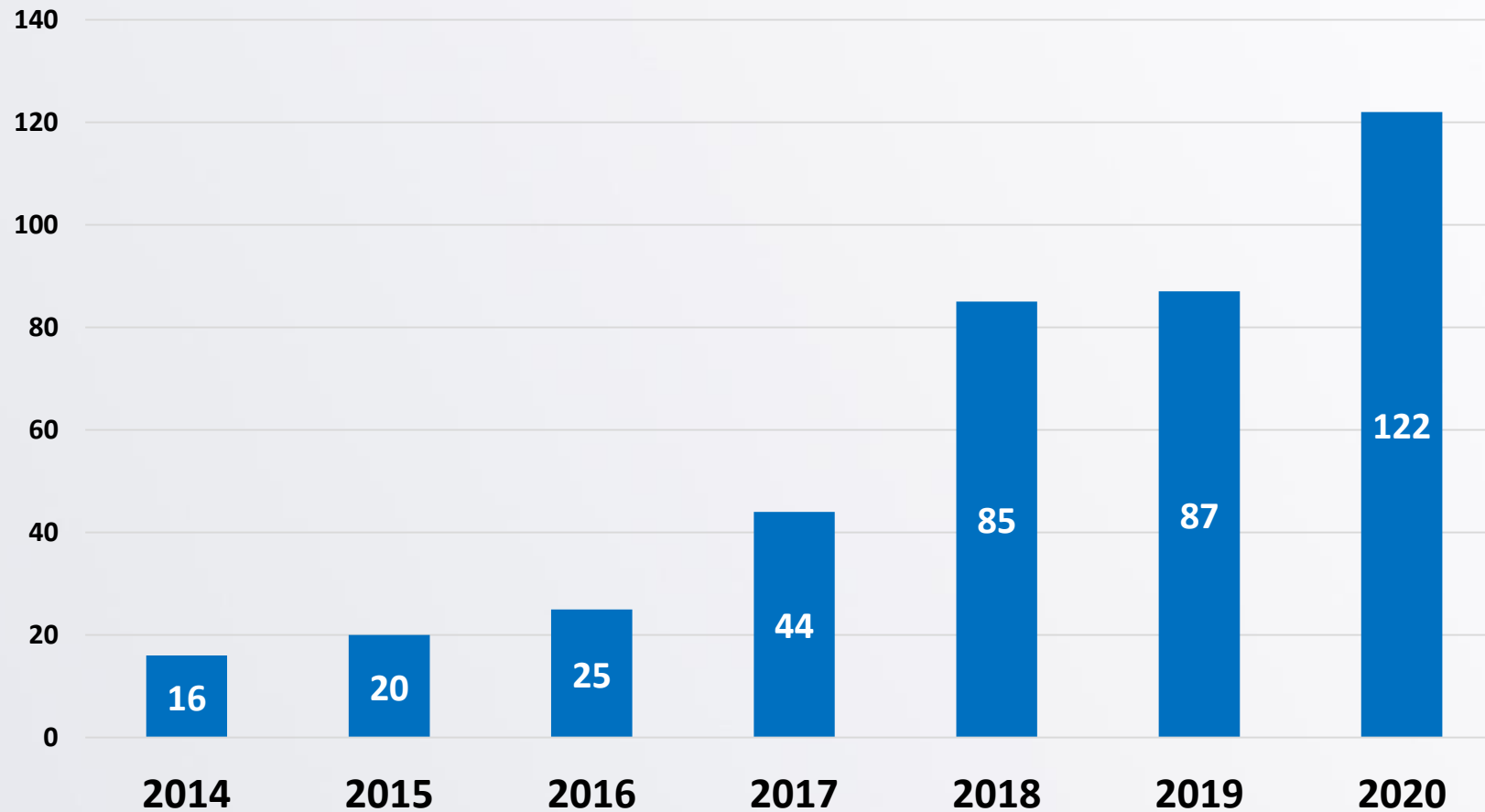
2019 & 2020

- American Geriatric Society Conference
- Society of General Internal Medicine
- Palliative Care Alliance in Research and Education Annual Conference
- Society for Research in Child Development
- Human Anatomy and Physiology Society (HAPS) Conference
- Centennial Congress of the Medical Women’s International Association (multiple students)
- American Diabetes Association
- American Medical Association –Research Symposium
- International Infectious Disease Conference
- American College of Physicians –NorCal Chapter
- Endocrine Society Conference

Faculty-Student Scholarly Publications



CNUCOM Publications



Student Academic and Scholarly Achievements



Student Scholarly Success

AWARDS

2019

- California Academy of Family Physicians National Conference Scholarship (**K Sheehan**)
- Best Poster Award at HAPS (**J Duval**)
- Vanessa Ho, Alirameen Akram. **National Institute of Aging Grant**, UCSF through the MSTAR (medical student training in aging research) Program.
- Leslie Marie Cachola. Hazelden Betty Ford Foundation - Student Immersion in Medicine Series Full Scholarship on Addiction Medicine.
- Leslie Marie Cachola. Chicago Minority Medical Students in Emergency Medicine - Grant for research and EM Immersion / Rotation Program
- Ahn S H - **NIDDK Award** – UCSF - 2019 Medical Research Program in Diabetes

2020

- Emily Lin Siegler- **NIDDK Award**- Washington University St Louis 2020 Medical Student Research Program.
- Jaycob Avaylon 2020 **J William Kohl Summer Research Scholarship** from UC Davis.
- Sara Toulouie 2020 **J William Kohl Summer Research Scholarship** from UC Davis
- Charlotte Ellberg **SRCD Early Career Travel Award** \$300 to support your attendance at the 2019 Biennial Meeting in Baltimore, Maryland, USA, on March 21-23.

Student Engagements in Public Health and Leadership



Community Health and Public Health

- ❑ COM students received the first place at AMA Public Health Competition
- ❑ COM students participated in over 10 Health Fairs and free clinical services
- ❑ California COM's students' research on Health School Athletes

Leadership

- ❑ COM student was elected as the national president of ACP student chapter
- ❑ COM students serve as the advisory board members for local high school medical career pathway
- ❑ COM students were highly praised by CMA and SSVMS CEO for their great leadership and participation



CNUCOM Camp Neuro, 2019

APAPA-EG Diversity in Medicine Summer Camp

A free week long camp for high school juniors and seniors from backgrounds underrepresented in the medical profession to discuss and interact with topics related to the battle against COVID-19.

Programming will include:

- Exploring Human Cells: A Model to Test Drugs Against COVID-19
- Coronavirus: Tiny Bug Controls the World
- Drug Design Improvement and Therapy
- Mental Health During COVID-19
- Career Advising: College Life
- Medical Careers in a Pandemic Era
- How Hand Sanitizer is Made
- 3D Printing Next Generation Personal Protective Equipment
- Pandemic Medical Education
- Simulated COVID-19 Emergency Room
- Leadership Talk: Diversity and Inclusion in Medicine

Camp is tentatively scheduled for July 27st through the 31st.

A stipened will be provided for student participation.

Camp may be moved to the week of August 3rd if necessary. Notice will be provided



Sponsored by Intel

For more information, contact samantha.webster@cnsu.edu



COM Student Counselors and Volunteers

Tanya Talwar

Pranshul Goel

Steven Wright

Rachel Isaacs

Krista Tenerelli

Shirley Kim

Chloe Sumner

Justin Tang

Jason Tang

Amrit Narwan

Vincent Ma

Emily Siegler

Kim Lau

Michael Abala

Andrew Maneval

Zoe Robinow

Shadi Salimi

Samantha Peralta

Anusri Yanumula

Henry Kim

Caite McGrath

Sequoia Halloran

Sabrina Christensen

Sylvia Dinh

Rithvik Nallapareddy

CNU & APAPA

20



20

Diversity in Medicine
Summer Camp



Dr. Kirch (AAMC) Comments on CNUCOM



- ❑ Our innovative courses, faculty enthusiasm to provide an engaging and inventive medical education to our students.
- ❑ Students' strong engagement in program's integration of cultural competency, societal issues, ethics, and professionalism into the curriculum
- ❑ Described CNUCOM as a socially accountable model with exceptional community engagement.
- ❑ Unique advantage in having different healthcare degree programs in close proximity when planning and delivering Inter-Professional Education (IPE).

